

Continuous Flow Coolers

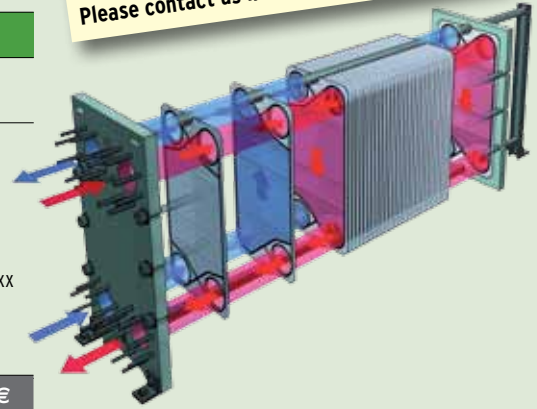
Should this modular system not meet your requirements, or not completely, we can also design a unit to suit your individual needs.
Please contact us in this respect.

DRW Plate Heat Exchanger for Cooling Must, Juice and Beer

Users in the beverage industry can select the unit best suited to their requirements with this modular system of sealed heat exchangers.

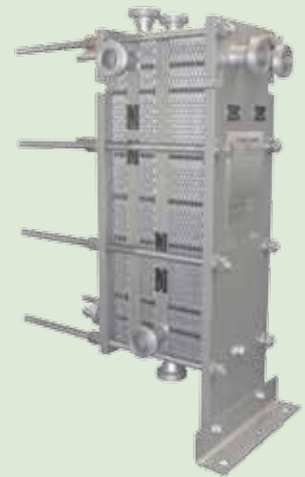
Features:

- ▶ Plate material: 1.4404 or 316L (V4A)
- ▶ Seal material: NBR (Food Grade)
- ▶ Max. operating pressure: 10 bar
- ▶ Operating temperature range: 5... 95 °C *)
- ▶ Connections: Threaded coupling (external thread) acc. to DIN 11851
- ▶ Solid content: Max. 3-5 % of volume with max. particle size 1 mm
- ▶ Standard frame: Steel ST52-3; primer coat; Top coat RAL7001 (silver grey) or RAL6011 (reseda green) or RAL5010 (gentian blue); Special paint finishes: available on request
- ▶ High-quality frame (1.4571): PWÜx-0.5-xx to PWÜx-10-xx
PWÜx-20-xx: All-round sealed cladding 1.4301; Core: S355J2
- ▶ Options: Splash guard, ring spanner



Designation	Details	Order no.	Unit price/€
PWÜ1-0,5-ST	PWÜ; painted steel frame; 500 l/h; cooling 40 °C => 20 °C	302.0550	
PWÜ1-0,5-VA	PWÜ; stainless steel frame; 500 l/h; cooling 40 °C => 20 °C	302.0551	
PWÜ1-2-ST	PWÜ; painted steel frame; 2,000 l/h; cooling 40 °C => 20 °C	302.0552	
PWÜ1-2-VA	PWÜ; stainless steel frame; 2,000 l/h; cooling 40 °C => 20 °C	302.0553	
PWÜ1-5-ST	PWÜ; painted steel frame; 5,000 l/h; cooling 40 °C => 20 °C	302.0554	
PWÜ1-5-VA	PWÜ; stainless steel frame; 5,000 l/h; cooling 40 °C => 20 °C	302.0555	
PWÜ1-10-ST	PWÜ; painted steel frame; 10,000 l/h; cooling 40 °C => 20 °C	302.0556	
PWÜ1-10-VA	PWÜ; stainless steel frame; 10,000 l/h; cooling 40 °C => 20 °C	302.0557	
PWÜ1-20-ST	PWÜ; painted steel frame; 20,000 l/h; cooling 40 °C => 20 °C	302.0558	
PWÜ1-20-VA	PWÜ; stainless steel frame 1.4571; 20,000 l/h; cooling 40 °C => 20 °C	302.0559	
PWÜ2-0,5-ST	PWÜ; painted steel frame; 500 l/h; cooling 25 °C => 10 °C	302.0560	
PWÜ2-0,5-VA	PWÜ; stainless steel frame 1.4571; 500 l/h; cooling 25 °C => 10 °C	302.0561	
PWÜ2-2-ST	PWÜ; painted steel frame; 2,000 l/h; cooling 25 °C => 10 °C	302.0562	
PWÜ2-2-VA	PWÜ; stainless steel frame 1.4571; 2,000 l/h; cooling 25 °C => 10 °C	302.0563	
PWÜ2-5-ST	PWÜ; painted steel frame; 5,000 l/h; cooling 25 °C => 10 °C	302.0564	
PWÜ2-5-VA	PWÜ; stainless steel frame 1.4571; 5,000 l/h; cooling 25 °C => 10 °C	302.0565	
PWÜ2-10-ST	PWÜ; painted steel frame; 10,000 l/h; cooling 25 °C => 10 °C	302.0566	
PWÜ2-10-VA	PWÜ; stainless steel frame 1.4571; 10,000 l/h; cooling 25 °C => 10 °C	302.0567	
PWÜ2-20-ST	PWÜ; painted steel frame; 20,000 l/h; cooling 25 °C => 10 °C	302.0568	
PWÜ2-20-VA	PWÜ; stainless steel frame 1.4301; 20,000 l/h; cooling 25 °C => 10 °C	302.0569	

*) Caution: There is a risk of damage to the unit caused by frost if the product or water temperatures are too low

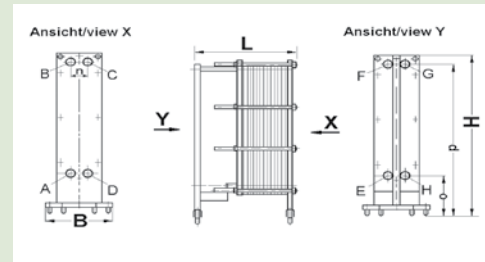


Technical data for PWÜ1 plate heat exchanger

Cooling of product from 40 °C to 20 °C (water from 5 °C to 10 °C)					
Model (painted steel frame)	PWÜ1-0,5-ST	PWÜ1-2-ST	PWÜ1-5-ST	PWÜ1-10-ST	PWÜ1-20-ST
Model (stainless steel frame)	PWÜ1-0,5-VA	PWÜ1-2-VA	PWÜ1-5-VA	PWÜ1-10-VA	PWÜ1-20-VA
Heat flow [kW]	11	45	440	220	445
Must/juice/beer flow rate [l/h]	500	2,000	5,000	10,000	20,000
Water flow rate [l/h]	1,900	7,600	19,000	38,000	76,000
Must/water pressure loss [bar]	0.2 / 0.3	0.2 / 0.7	0.2 / 0.7	0.2 / 0.9	0.2 / 0.9
Connections acc. to DIN 11851	DN 32	DN 32	DN 50	DN 50	DN 65
Width [mm]	300	300	340	340	380
Height [mm]	730	730	1,026	1,026	1,261
Depth [mm]	365	365	610	610	615
Approx. tare weight [kg]	60	70	150	170	250

Cooling Technology

Technical data for PWÜ2 plate heat exchanger					
Cooling of product from 25 °C to 10 °C (water from 5 °C to 10 °C)					
Model (painted steel frame)	PWÜ2-0,5-ST	PWÜ2-2-ST	PWÜ2-5-ST	PWÜ2-10-ST	PWÜ2-20-ST
Model (stainless steel frame)	PWÜ2-0,5-VA	PWÜ2-2-VA	PWÜ2-5-VA	PWÜ2-10-VA	PWÜ2-20-VA
Heat flow [kW]	8	33	83	220	330
Must/juice/beer flow rate [l/h]	500	2,000	5,000	10,000	20,000
Water flow rate [l/h]	1,400	5,700	14,000	28,000	57,000
Must/water pressure loss [bar]	0.1 / 0.3	0.2 / 0.7	0.2 / 0.7	0.2 / 0.9	0.2 / 0.9
Connections acc. to DIN 11851	DN 32	DN 32	DN 50	DN 50	DN 65
Width [mm]	300	300	340	340	380
Height [mm]	730	730	1,026	1,026	1,261
Depth [mm]	365	365	610	610	615
Approx. tare weight [kg]	60	70	160	190	280



A: Water inlet; B=Water outlet;
C: Product inlet; D=Product outlet

Dimensional drawing (we reserve the right to make technical changes after award of contract!)

Heat Exchangers to Customer Specifications

We can supply you with heat exchangers for process temperature control to meet your individual specifications. Please tell us your requirements and we will develop the optimum solution for you.



FPH Mobile Heating Unit

It is frequently necessary to introduce heat in a targeted manner during beverage production processes. FPH series electric heating units provide you with adequate volumes of hot water. The water temperature can be preselected on the electronic temperature controller. The integrated stainless steel centrifugal pump ensures that consumers are supplied with a generously designed delivery head.

Features

- ▶ Operating voltage: 400/50 Hz (alternating current)
- ▶ Open stainless steel tank with 80 litres capacity
- ▶ Stainless steel centrifugal pump: 2.5m³/h@3.2bar
- ▶ Control: electronic for consistent media temperature *)
- ▶ Safety: Water level monitor and overheating protection
- ▶ Overpressure system: Bypass control
- ▶ Mobile on casters
- ▶ Integrated filter as pump protection
- ▶ Dimensions: W x D x H=510 x 450 x 435 mm
- ▶ Weight: approx. 45 kg

Designation	Details	Order no.	Unit price/€
FPH 9	9 kW heating capacity	302.1003	
FPH 18	18 kW heating capacity	302.1004	
FPH 24 *)	24 kW heating capacity	302.1005	

*) FPH 24 heating control only

